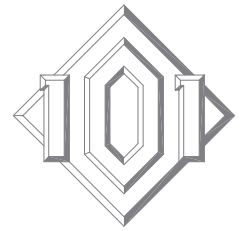


# FLOOR 10

SUITE 1075 / 2,966 SF

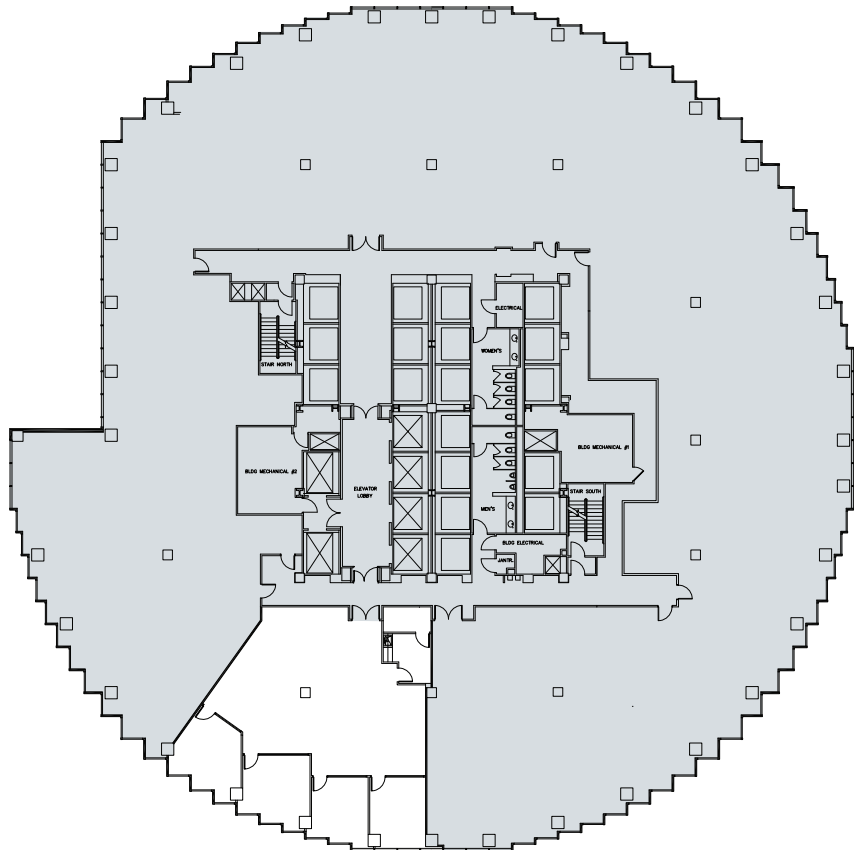
AVAILABLE IN 30 DAYS



101 CALIFORNIA

## AS BUILT PLAN-

- Highly improved pre-built suite-
- 3 perimeter offices with glass fronts, 1 perimeter conference room with glass front, kitchen with sink and upper and lower cabinets, reception area and telecom closet-
- Exceptional San Francisco cityscape views-



FOR LEASING INFORMATION, CONTACT:

### JOHN CECCONI

Executive Vice President  
Lic. 00676355  
+1 415 291 8883  
john.cecconi@cbre.com

### KEN CHURICH

Senior Vice President  
Lic. 00887925  
+1 415 291 1728  
ken.churich@cbre.com

### SAM STEIN

Associate  
Lic. 02026162  
+1 415 772 0209  
sam.stein@cbre.com

**Hines** **CBRE**

© 2018 CBRE, Inc. All rights reserved. This information has been obtained from sources believed reliable, but has not been verified for accuracy or completeness. You should conduct a careful, independent investigation of the property and verify all information. Any reliance on this information is solely at your own risk. CBRE and the CBRE logo are service marks of CBRE, Inc. All other marks displayed on this document are the property of their respective owners. Photos herein are the property of their respective owners and use of these images without the express written consent of the owner is prohibited. PMStudio\_November 2018