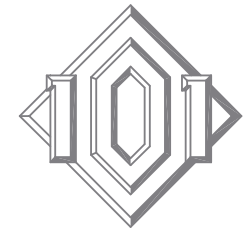
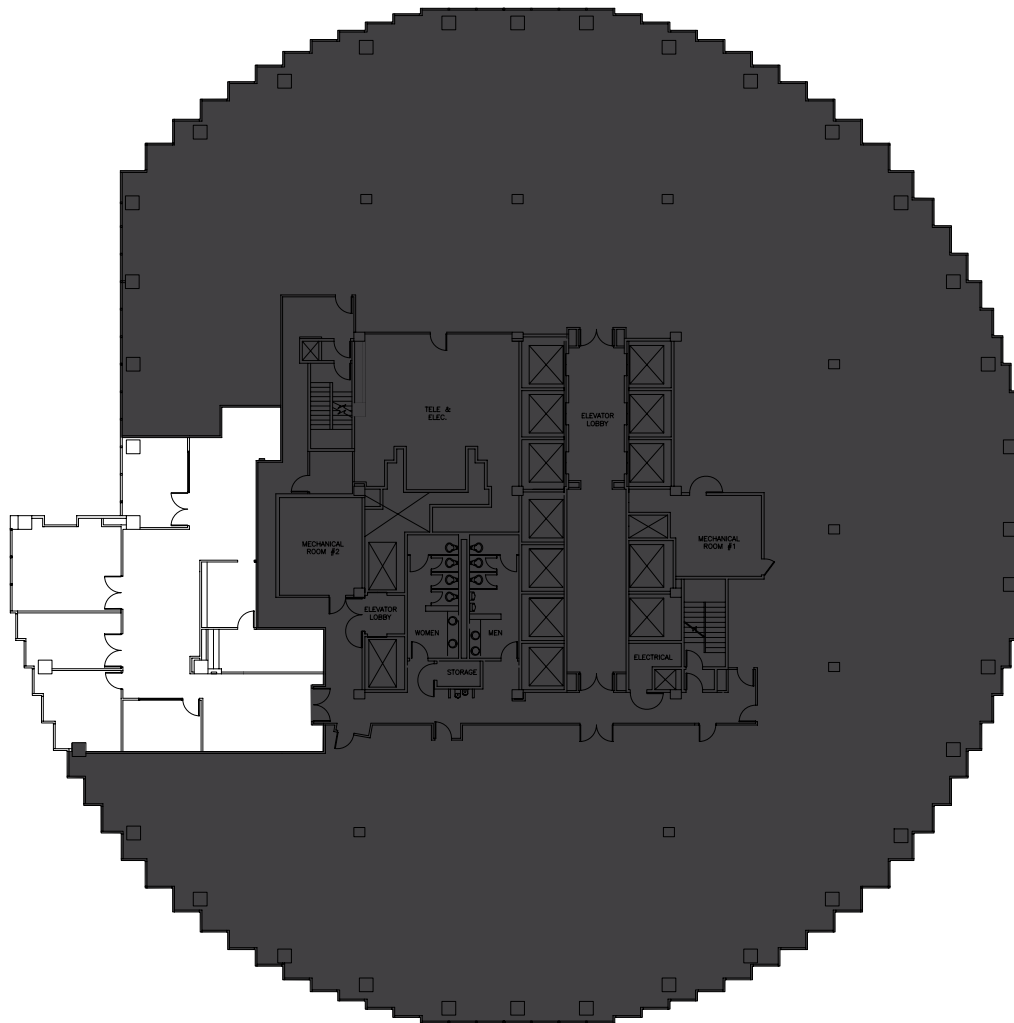


28/FL  
3,124 sf



101 CALIFORNIA



#### As Built Plan

- Pre-built suite
- 3 perimeter offices, 1 interior office, 1 perimeter conference room, 1 kitchen/production area
- Exceptional views of the Golden Gate Bridge, Mt. Tam, Angel Island and San Francisco Bay
- Available May 15, 2018

#### Contact

David Eaton  
david.eaton@hines.com  
Matt Kruvant  
matt.kruvant@hines.com  
101 California Street, Suite 1000  
San Francisco, CA 94111  
415.982.6200  
www.101california.com



**Hines**