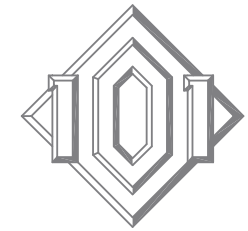
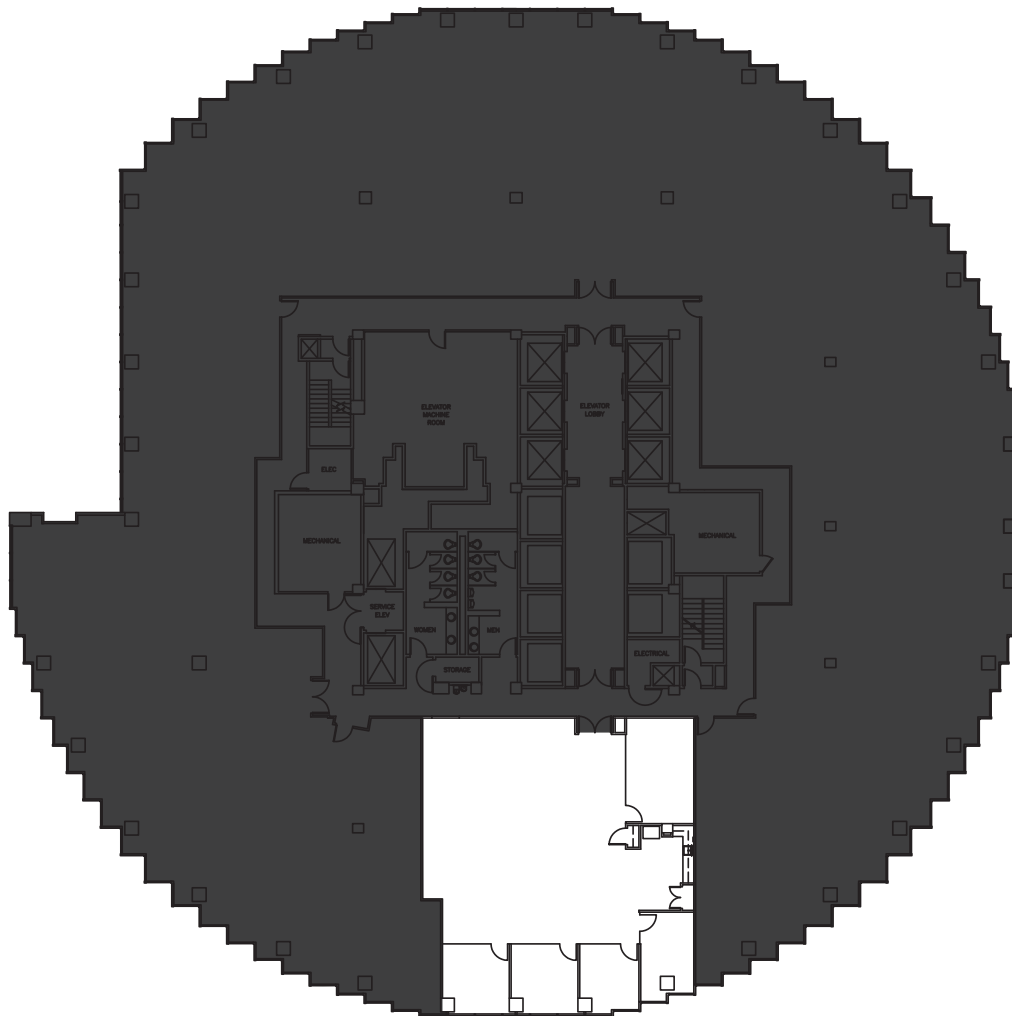


28/FL  
3,159 sf



101 CALIFORNIA



#### As Built Plan

- New pre-built suite
- 4 perimeter offices with full-height glass fronts, 1 interior conference room with full-height glass front, kitchen/production area, substantial open area
- Double door elevator identity
- Available immediately

#### Contact

David Eaton  
david.eaton@hines.com  
Matt Kruvant  
matt.kruvant@hines.com  
101 California Street, Suite 1000  
San Francisco, CA 94111  
415.982.6200  
www.101california.com



**Hines**