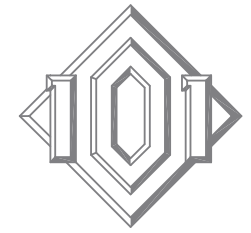
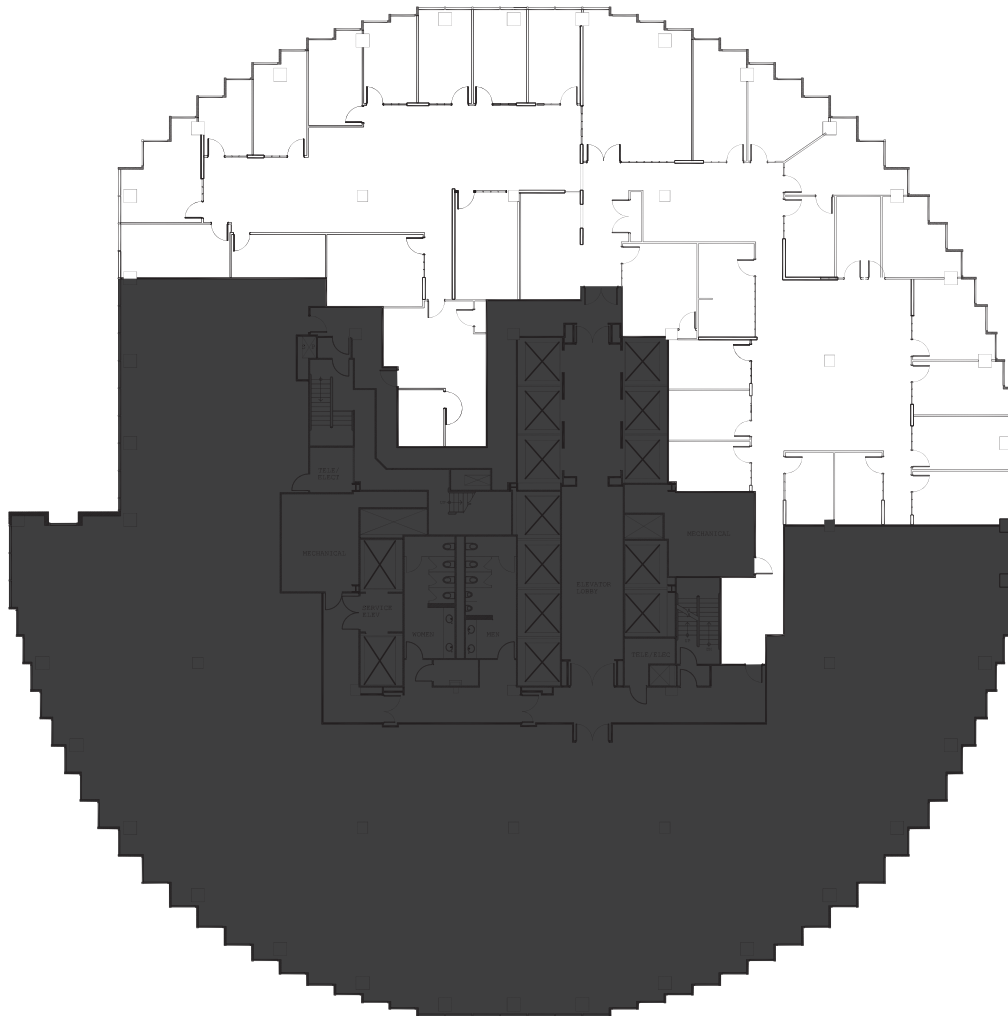


29/FL  
11,540 sf



101 CALIFORNIA



#### As Built Plan

- High-end, office intensive build-out
- Double-door identity
- 17 perimeter private offices with glass fronts, 9 internal private offices with glass fronts, 1 large perimeter conference room with glass front, 3 internal conference rooms
- Panoramic views of the Golden Gate Bridge, Bay Bridge, Mt. Tam, Alcatraz, Coit Tower, and Pacific Ocean
- Available immediately

#### Contact

David Eaton  
david.eaton@hines.com  
Matt Kruvant  
matt.kruvant@hines.com  
101 California Street, Suite 1000  
San Francisco, CA 94111  
415.982.6200  
www.101california.com



**Hines**